



Operating instructions

Granit mower rack MRR5
Item no.: 7791200288

Granit mower rack MRR6
Item no.: 7791200296



version 1.1
Status: April 2020

Wilhelm Fricke SE
To Kreuzkamp 7
27404 Heeslingen
Germany
www.granit-parts.com
+49 4281 712 -0

Content

1	Safety.....	3
1.1	Introduction	3
1.2	Safety regulations for commissioning.....	3
1.3	Safety regulations for operation	3
1.4	Safety devices on the rack	3
1.5	Rack Inspection	3
1.6	Environmental information / disposal	3
2	Technical manual.....	4
2.1	List of items.....	4
2.2	Technical data.....	4
3	Mounting the rack	5
3.1	Foreword.....	5
3.2	Choice of location.....	5
3.3	Functional description	5
3.4	Preparation for mounting.....	5
3.5	Mounting the rack.....	6

The information provided in this manual has been carefully checked, but errors cannot be completely ruled out. This manual is intended for users with technical knowledge in the field of inspection and repair. We reserve the right to make technical and content changes.

Status of the operating instructions: April 2020

1 Safety

1.1 Introduction

The assembly and operating instructions are part of a mower rack.

No liability is accepted for personal injury, damage to the work equipment and the rack, which is caused by failure to comply with these operating instructions.

The following safety instructions are intended to help prevent personal injury and damage to property. For your own safety, it is absolutely necessary to observe the safety instructions in this operating manual. In addition, the applicable national and international safety regulations of the responsible authorities for occupational safety and accident prevention must be observed. Each operator is responsible for complying with these regulations.

1.2 Safety regulations for commissioning

The rack is approved for installation and use in dry rooms only. Use in damp and wet rooms as well as in rooms subject to explosion hazards is not permitted.

1.3 Safety regulations for operation

The operating instructions must be accessible and must be observed by every user. The legal regulations for accident prevention must be observed. Statutory provisions and regulations have priority over the operating instructions.

Use only as intended. The specified payload must not be exceeded.

Persons may not be transported with the rack. Climbing up the rack is also prohibited.

The racks are intended exclusively for loading and unloading by hand.

Not intended for storage of food products.

The correct functioning of the safety devices must be checked regularly. If there are irregularities in the safety devices, the rack must not be used.

Any liability of the manufacturer is excluded if safety instructions and/or respective legal regulations are not observed.

ATTENTION! Do not drive the rollable rack over uneven surfaces or bumps, door thresholds or sloping ramps.
The rack could tip over!

Generally applicable laws, standards and regulations must be observed.

1.4 Safety devices on the rack

Swivel castors with parking brake:

Brake must be in the locked position in order to secure the rack against movement.

1.5 Rack Inspection

A rack inspection is a regular check of commercially used shelves. Since unintentional damage can occur during loading and unloading of shelves, the shelving inspection is meant to identify these damages. The purpose of a rack inspection is to prevent accidents. According to the Industrial Safety Regulation, the employer is responsible for the safety of his storage facilities. Shelves must be inspected by a competent person at least every 12 months.

1.6 Environmental information / disposal

Old and defective components as well as the packaging materials can be separated according to type so that they can be disposed of in an environmentally friendly manner or recycled as required.

2 Technical manual

2.1 List of items

The following is supplied with each rack:

	RACK - WIDE MRR5	RACK - NARROW MRR6
	7791200288	7791200296
2	Base wide approx. 1215x700	Base wide approx. 715x700
2	Base narrow approx. 1205x700	Base narrow approx. 705x700
1	Base narrow with 4 holes approx. 1205x700	Base narrow with 4 holes approx. 705x700
2	Cross section	Cross section
2	Longitudinal profile thick 50x50	Longitudinal profile thick 50x50
2	Longitudinal profile thin 40x40	Longitudinal profile thin 40x40
4	Castors with locking device	Castors with locking device
4	Stiffening strips	Stiffening strips
1	Small parts set with connecting materials	Small parts set with connecting materials
1	Operating instructions in local language	Operating instructions in local language

2.2 Technical data

	RACK - WIDE MRR5	RACK - NARROW MRR6
Item number	7791200288	7791200296
Weight	155 kg	105 kg
Payload	250 kg	250 kg
Rack load (per rack)	50 kg	50kg
Dimensions LxWxH	1400x900x1710	750x900x1710
Column colour	RAL 7016 dark grey	RAL 7016 dark grey
Colour rack	RAL 7001 light grey	RAL 7001 light grey

Note: Technical data and dimensions are subject to change without notice.

3 Mounting the rack

3.1 Foreword

Before removing from the packaging, assembly instructions must be read and followed exactly. Improper assembly will lead to exclusion of liability and warranty. Please note that there is a risk to life and limb in the event of incorrect installation. Wilhelm Fricke SE assumes no liability, guarantee or warranty for products and parts destroyed by improper assembly or handling.

Our products, part of which are pre-assembled, are not fully assembled and checked for function before shipping but are merely assembled to facilitate assembly. Loading, unloading and transport cause shocks to which the product is not exposed when in "normal operation", therefore it is imperative to check for loosened screw connections. Basically, the following applies: pre-assembled parts must be checked, retightened, greased and oiled and, if necessary, repaired in accordance with the recognised rules of technology before commissioning. This also applies to components that still must be mounted on the contraption. It may also happen that e.g. a thread soiled by paint will have to be cleaned: this is considered a normal aspect of the assembly of a rack and not a defect in the sense of the warranty. Nor to be considered a defect, is a screw that has been strangled/wrought by screwing it in crookedly or torn off by excessive torque: these risks are borne by the fitter/mounter.

Check **screws and mechanics** for correct and tight fit, check moving parts for free movement and lubricate.

3.2 Choice of location

The rack is approved for assembly in closed dry workshop rooms. Use in damp and wet rooms as well as in rooms at risk of explosion is not permitted. The rack unit must be set up and stored on a level surface!

3.3 Functional description

The rack is used for safe transport and storage of mowing robots in workshops and sales rooms.

3.4 Preparation for mounting

Ensure that the unit is clean, and that sufficient working space is available for installation. Open the packaging and remove the parts. Ensure that no parts are lost.

Sort the screws according to the following sizes!

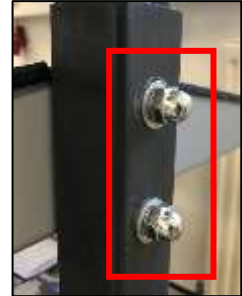
16x M8 : black for rollers
16x washers for M8 (rollers)
16x nut M8 for rollers
4x M6 x for handle
2x M8 x 75
8x M8 x 70
6x M8 x 65
8x M8 x 55
24x cap nut M8

3.5 Mounting the rack

You need a second person to mount the rack!

- 1) Remove the cross profile (1) and attach the enclosed castors with locking device (2) to the plates provided.
16x M8 (black) with washer and nut
- 2) Lock the wheels (2) by applying the parking brake.

ATTENTION! The screws are screwed from the outside on each shelf. This means that the head of the screw lies in the shelf and the cap nut is screwed onto the screw from the outside.



- 3) Remove the narrow base (3) with the 4 holes.
- 4) Fasten this base (3) first through the 2 outer holes with the cross profile. 8x screw M8 x 70
- 5) To give the rack more stability, now mount the 4 stiffeners (11) on the frame.
- 6) Then take the short lug (4) and fix the lower hole of the bottom (3) with the crossbar (1) and the lug (4).
- 7) Now take the wide longitudinal profile (5) and place it between the tab (4) and the shelf (3). Ensure that there is only one hole on the underside and 2 holes on the opposite side! Afterwards you can also fix the screw here from the inside to the outside through the profile and the tab.
- 8) Carry out steps 4 - 6 also for the opposite side and place the shelf on the locked castors (2)!
- 9) In the next step, fix the next shelf (6) from below. 2x M8 x 75 / 2x M8 x 65
- 10) The stiffeners (11) are also fixed in the lower screw (M8 x 75).
- 11) Now remove the narrow longitudinal profile (7) and insert it into the wide longitudinal profile (5) from above. Ensure that the holes match the existing holes in the wide longitudinal profile (5).
- 12) Now lift the next shelf (8) to the height of the holes and screw it to the two profiles (5 + 7). 4x M8 x 65
- 13) Now you can attach the two wide shelves (9 + 10) to the narrow profiles (7). 4x M8 x 55 for each shelf
! ATTENTION! The warning notices and the shelf and rack carrying payload limit stickers are attached to the side of shelf 10.
- 14) The upper profile (7) now has 2 holes for the enclosed handles (12). Mount the handles (12) here with the cap nuts facing inwards. 4x M6



Instruction manual for GRANIT mowing robot rack MRR5 and MRR6

Warranty

The warranty conditions of the company Wilhelm Fricke SE apply, which can be found in the sales documents as well as in the valid version of the general terms and conditions.

If you have any questions, please contact the company's customer service management.

Address

Sales / Customer Service Management / Spare Parts Sales:

Tel.: +49 (4281) 712 712

Fax: +49 (4281) 712 324

Postal and delivery address:

Wilhelm Fricke SE

To Kreuzkamp 7

D-27404 Heeslingen

Imprint

Distributor: Wilhelm Fricke SE - D-27404 Heeslingen
1st edition March 2020
© 2020 Wilhelm Fricke SE
Reprinting, even in extracts, only with the written permission of the company Wilhelm Fricke SE
All product names mentioned in this manual are trademarks of their respective companies.
Printed on paper made from chlorine- and acid-free bleached pulp