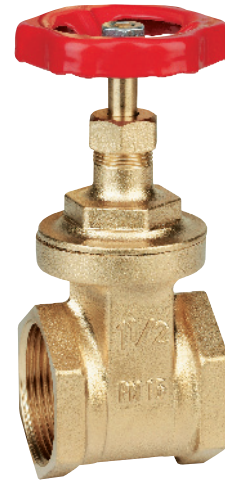




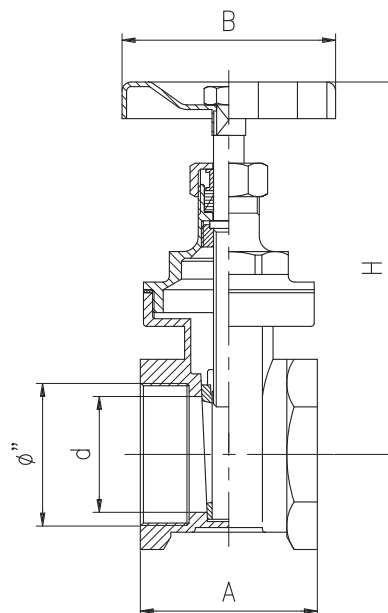
# art. 3070

**saracinesca pesante in ottone***heavy brass gate valve**vanne en laiton lourde**Schwerer Messingschieber**válvula de laton tipo pesado***Filettatura: gas cilindrica UNI EN ISO 228/1**

Thread: BSP parallel UNI EN ISO 228/1

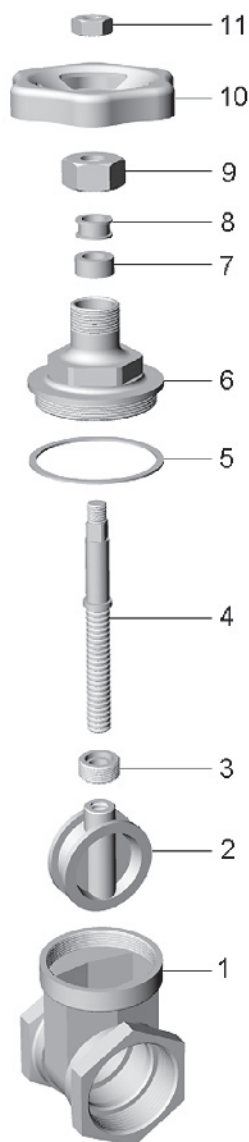


Ø"	1/4"	3/8"	1/2"	3/4"	1"	1"1/4"	1"1/2"	2"	2"1/2"	3"	3"1/2"	4"	5"	6"
<b>H</b>	67	67	68	78	91	108	125	143	175	200	225	235	300	360
<b>B</b>	45	45	45	50	55	60	70	80	100	100	120	120	140	170
<b>A</b>	33	33	38	44	48	51	58	63	64	74	79	84	107	113
<b>d</b>	11	13	15	19	24	32	37	47	60	72	83	93	117	143
<b>gr ~</b>	165	150	185	250	360	545	685	1.050	1.680	2.185	3.430	4.140	8.550	12.650

**Codici di ordinazione**

Purchase article numbers

**Saracinesca pesante in ottone**  
Heavy brass gate valve**ARIN 3070 (DN) 000**



## Condizioni di esercizio

Work conditions

DN	1/4" ÷ 4"	5" - 6"
P (bar)	16	10
P (PSI)	230	145
T (°C)	-15 +80	

## Tabella conversione Ø"(in) - DN (mm)

Ø"(in) - DN (mm) conversion table

Ø"	1/4"	3/8"	1/2"	3/4"	1"	1 1/4"	1 1/2"	2"	2 1/2"	3"	3 1/2"	4"	5"	6"
DN	006	010	015	020	025	032	040	050	070	080	095	100	125	150

POS.	CODICE / CODE	DENOMINAZIONE	DENOMINATION	MATERIALE	MATERIAL
1	FOIN 3070 (DN) 001	CORPO	BODY	OTTONE UNI EN 1982	UNI EN 1982 BRASS
2	FOIN 3070 (DN) 002	CUNEO	GATE	OTTONE UNI EN 1982	UNI EN 1982 BRASS
3	TOIN 3070 (DN) 003	FERMO FILETTATO	SCREWED STOP	OTTONE UNI EN 12164	UNI EN 12164 BRASS
4	TOIN 3070 (DN) 004	ASTA FILETTATA	SCREWED STEM	OTTONE UNI EN 12164	UNI EN 12164 BRASS
5	GGUA 3070 (DN) 005	GUARNIZIONE	GASKET	FIBRA	FIBRE
6	FOIN 3070 (DN) 006	VITONE	TOP SCREW	OTTONE UNI EN 1982	UNI EN 1982 BRASS
7	GGOM 3070 (DN) 007	GUARNIZIONE	GASKET	GOMMA NBR 75	NBR 75 RUBBER
8	TOIN 3070 (DN) 008	ANELLO PREMISTOPPA	GASKET-PRESSER NUT	OTTONE UNI EN 12164	UNI EN 12164 BRASS
9	TOIN 3070 (DN) 009	CALOTTA	SCREWED RING	OTTONE UNI EN 12164	UNI EN 12164 BRASS
10	SAIN 3070 (DN) 010	VOLANTINO	HANDWHEEL	ACCIAIO	STEEL
11	DAAC 3070 (DN) 011	DADO	NUT	ACCIAIO ZINCATO	ZINC PLATED STEEL