



art. 0024

rubinetto a tre vie flangiato

three-ways flanged cock

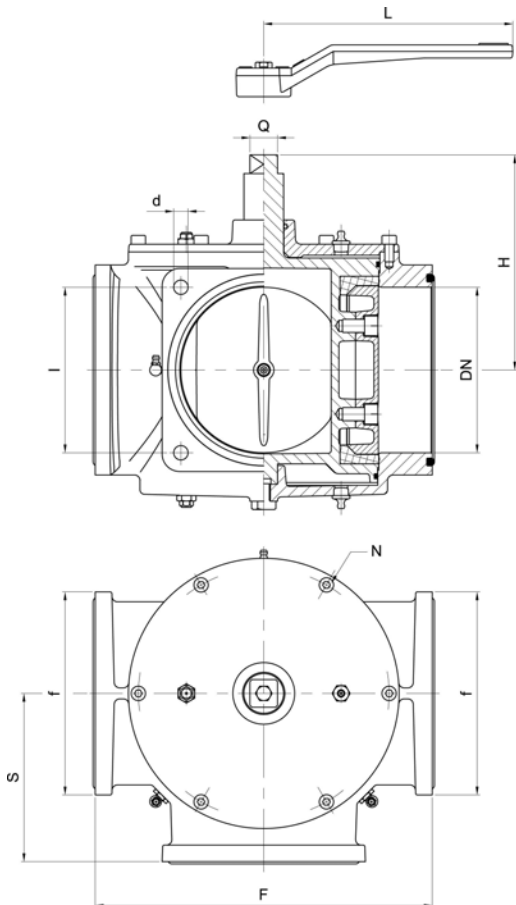
robinet à trois voies avec brides

Dreiwegehahn mit Flanschen

valvula tres vías con bridas



Maschio cilindrico con guarnizione di tenuta
Cylindrical male with sealing gasket



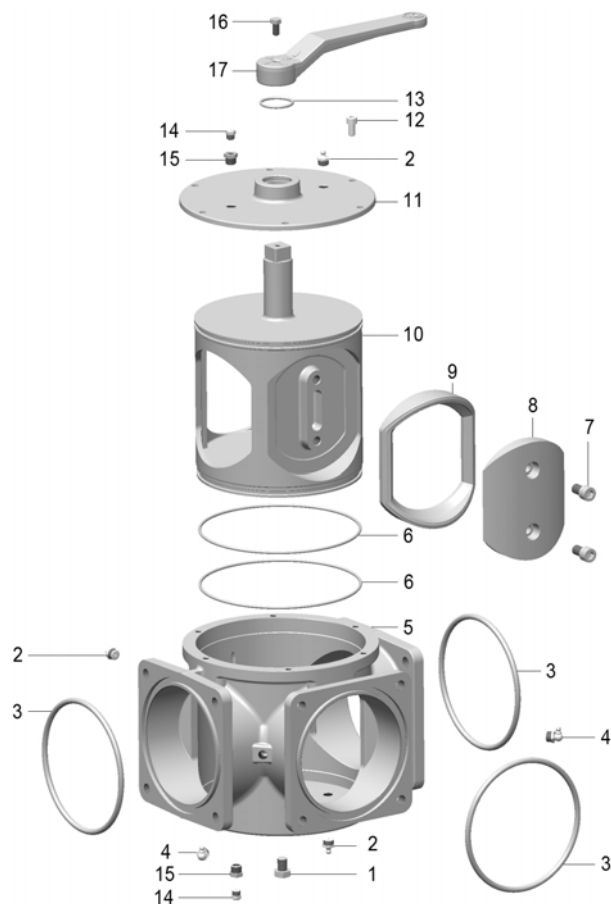
| | | |
|------------------------|--------|--------|
| DN | 6" | 8" |
| H | 189 | 220,5 |
| Q | 25 | 34 |
| d | 13 | 13 |
| I | 150 | 180 |
| f | 184 | 228 |
| F | 305 | 360 |
| S | 152,5 | 180 |
| L | 325 | -- |
| N | 6 | 8 |
| Peso gr ~ Weight gr | 33.000 | 55.500 |

Codici di ordinazione
Purchase article numbers

| | 6" | 8" |
|---|-------------------|-------------------|
| Rubinetto a 3 vie Three-ways flanged cock | ARZO 0024 150 000 | ARZO 0024 200 000 |
| Rubinetto a 3 vie con leva Three-ways flange cock with lever | ARZO 0024 150 00L | |



zootechnics-ecology / zootechnie-écologie
Tierhaltung-Ökologie / acessórios para cisterna

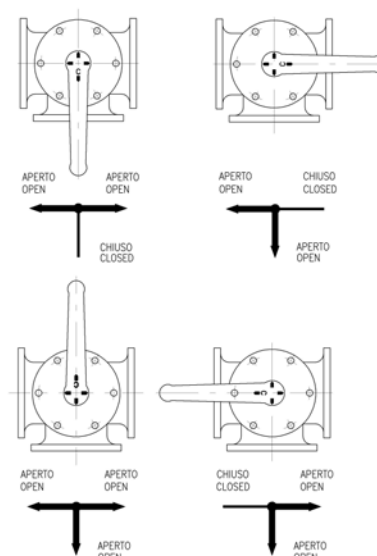


Condizioni di esercizio

Work conditions

| | |
|---------|---------|
| DN | 6" - 8" |
| P (bar) | 4 |
| P (PSI) | 60 |
| T (°C) | -15 +80 |

SCHEMA DIREZIONE DI FLUSSO DIRECTIONAL FLOW DIAGRAM



| POS | CODICE / CODE | DENOMINAZIONE | DENOMINATION | MATERIALE | MATERIAL |
|-----|-------------------|-------------------------------|---------------------------------|------------------------|----------------------------|
| 1 | VTAC 0024 150 013 | VITE TE M12×16 | SCREW TE M12×16 | ACCIAIO INOX AISI 304 | AISI 304 STAINLESS STEEL |
| 2 | INGR 0020 100 012 | INGRASSATORE 1/4" | GREASE NIPPLE 1/4" | ACCIAIO | STEEL |
| 3 | ..OR 0020 100 010 | OR 225 (Øi 159,5 × 6,99) 6" | O RING 225 (Øi 159,5 × 6,99) 6" | GOMMA NBR 70 | NBR 70 RUBBER |
| 3 | ..OR 0020 200 010 | OR 240 (Øi 202,6 × 6,99) 8" | O RING 240 (Øi 202,6 × 6,99) 8" | GOMMA NBR 70 | NBR 70 RUBBER |
| 4 | INGR 0020 100 12A | INGRASSATORE 1/4" A 45° | GREASE NIPPLE 1/4" 45° | GHISA G250 UNI EN 1561 | G250 UNI EN 1561 CAST IRON |
| 5 | FGZO 0024 150 001 | CORPO 6" | BODY 6" | GHISA G250 UNI EN 1561 | G250 UNI EN 1561 CAST IRON |
| 5 | FGZO 0024 200 001 | CORPO 8" | BODY 8" | GHISA G250 UNI EN 1561 | G250 UNI EN 1561 CAST IRON |
| 6 | ..OR 0020 150 011 | OR 4775 (Øi 196,45 × 3,53) 6" | O RING 4775 (Øi 196,45×3,53) 6" | GOMMA NBR 70 | NBR 70 RUBBER |
| 6 | ..OR 0020 200 011 | OR 4950 (Øi 240,9 × 3,53) 8" | O RING 4950 (Øi 240,9×3,53) 8" | GOMMA NBR 70 | NBR 70 RUBBER |
| 7 | VTAC 0024 150 014 | VITE TCEI M12×20 | SCREW TCEI M12×20 | ACCIAIO INOX AISI 304 | AISI 304 STAINLESS STEEL |
| 8 | FOZO 0024 150 006 | FERMAGUARNIZIONE 6" | LOCK PLATE FOR GASKET 6" | OTTONE UNI EN 1982 | UNI EN 1982 BRASS |
| 8 | FOZO 0024 200 006 | FERMAGUARNIZIONE 8" | LOCK PLATE FOR GASKET 8" | OTTONE UN IEN 1982 | UNI EN 1982 BRASS |
| 9 | GGOM 0024 150 003 | GUARNIZIONE DI TENUTA 6" | SEALING GASKET 6" | GOMMA HNBR 75 | HNBR 75 RUBBER |
| 9 | GGOM 0024 200 003 | GUARNIZIONE DI TENUTA 8" | SEALING GASKET 8" | GOMMA HNBR 75 | HNBR 75 RUBBER |
| 10 | FOZO 0024 150 004 | MASCHIO 6" | MALE 6" | OTTONE UNI EN 1982 | UNI EN 1982 BRASS |
| 10 | FOZO 0024 200 004 | MASCHIO 8" | MALE 8" | OTTONE UNI EN 1982 | UNI EN 1982 BRASS |
| 11 | FGZO 0024 150 005 | TAPPO 6" | COVER 6" | GHISA G250 UNI EN 1561 | G250 UNI EN 1561 CAST IRON |
| 11 | FGZO 0024 200 005 | TAPPO 8" | COVER 8" | GHISA G250 UNI EN 1561 | G250 UNI EN 1561 CAST IRON |
| 12 | VTAC 0020 100 009 | VITE TCEI M8×16 | SCREW TCEI M8×16 | ACCIAIO INOX AISI 304 | AISI 304 STAINLESS STEEL |
| 13 | ..OR 0024 150 002 | OR 4143 (Øi 36,1 × 3,53) 6" | O RING 4143 (Øi 36,1×3,53) 6" | GOMMA NBR 70 | NBR 70 RUBBER |
| 13 | ..OR 0024 200 002 | OR 147 (Øi 42,86 × 3,53) 8" | O RING 147 (Øi 42,86×3,53) 8" | GOMMA NBR 70 | NBR 70 RUBBER |
| 14 | INGR 0700 100 007 | VAVOLA SPURGO GRASSO | BLEED VALVE | ACCIAIO | STEEL |
| 15 | TOZO 0024 150 008 | RIDUZIONE M-F 1/4"-M10×1 | M-F REDUCTION 1/4"-M10×1 | OTTONE UNI EN 12164 | UNI EN 12164 BRASS |
| 16 | VTAC 0030 100 008 | VITE TE M8×16 | SCREW TE M8×16 | ACCIAIO ZINCATO | ZINC PLATED STEEL |
| 17 | FOZO 0020 125 015 | MANIGLIA 5" - 6" | HANDLE 5" - 6" | OTTONE UNI EN 1982 | UNI EN 1982 BRASS |