



ANNIVERSARY
1953 - 2018



Battioni®
Pagani

Setting the pace since 1953

Technical Catalogue
Catálogo Técnico
Technischer Katalog

SWIVEL CAST IRON PIPE



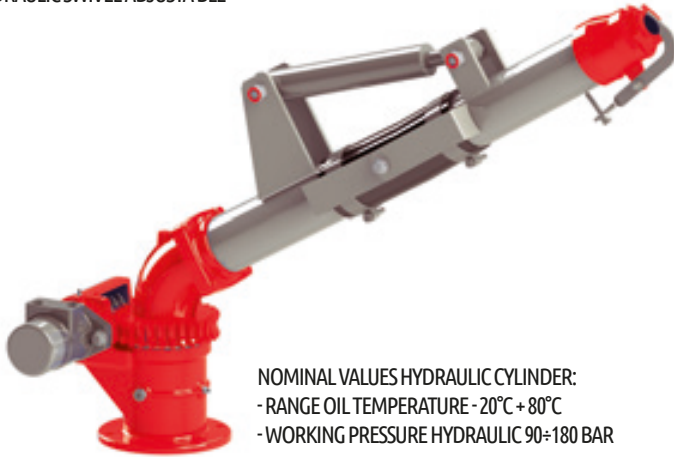
www.bapag.it

rev. 1 del 26/06/2019

SWIVEL CAST IRON PIPE WITH FLANGE Ø 3" - 4"

GETTO GIREVOLE FLANGIATO
REGNER MIT FLANSCH

HYDRAULIC SWIVEL ADJUSTABLE



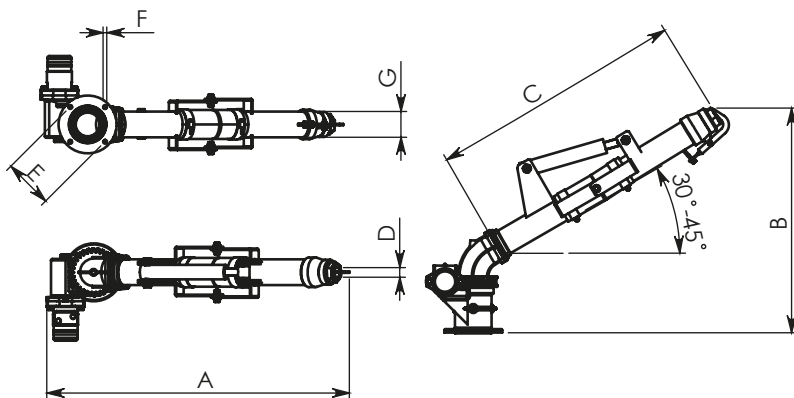
NOMINAL VALUES HYDRAULIC CYLINDER:
- RANGE OIL TEMPERATURE - 20°C + 80°C
- WORKING PRESSURE HYDRAULIC 90÷180 BAR

FEATURES

- HIGH RESISTANCE SPHEROIDAL CAST-IRON
- SUPPLIED WITH 1 O-RINGS FOR COUPLING
- EASY GREASING
- ROTATION OF 360°
- BREAK-SEWAGE
- GALVANIZED PIPE
- VERSION: MANUAL SWIVEL
HYDRAULIC SWIVEL
HYDRAULIC SWIVEL ADJUSTABLE
- HYDRAULIC MOTOR STANDARD

CARATTERISTICHE

- GHISA SFEROIDALE AD ALTA RESISTENZA
- FORNITURA CON 1 O-RING PER ACCOPPIAMENTO
- INGRASSAGGIO AGEVOLE
- ROTAZIONE DI 360°
- FRANGIGETTO DI SERIE
- TUBO ZINCATO
- VERSIONI: MANUALE
IDRAULICO
IDRAULICO REGOLABILE IN ALTEZZA
- MOTORE IDRAULICO STANDARD



EIGENSCHAFTEN

- HOCH WIDERSTANDSFÄHIGES SPHÄROLITISCHES GUSSEISEN
- GELIEFERT MIT 1 O-RING FÜR KOPPLUNG
- BEQUEMES SCHMIEREN
- DREHUNG UM 360°
- WASSERHAHNAUFSATZ SERIENMÄSSIG
- VERZINKTE LEITUNG
- AUSFÜHRUNGEN: MANUELL
HYDRAULISCH
HYDRAULISCH HÖHENVERSTELLBAR
- HYDRAULIKMOTOREN ALS SERIE

DIMENSION MANUAL SWIVEL

CODE	Ø	A	B	C	D	E	F	G	Kg	Article
6100300012	3"	985	726	890	25-34	170	13	2"1/2	25,5	209/D
6100300013	4"	985	726	890	34	170	13	3"	28,5	209/E

DIMENSION HYDRAULIC SWIVEL

CODE	Ø	A	B	C	D	E	F	G	Kg	Article
6100300026	3"	971	726	890	25-34	170	13	2"1/2	25,5	210/F
6100300027	4"	971	726	890	34	170	13	3"	28,5	210/G

DIMENSION HYDRAULIC SWIVEL ADJUSTABLE

CODE	Ø	A	B	C	D	E	F	G	Kg	Article
6100300028	3"	971	765	890	25-34	170	13	2"1/2	28	211/F
6100300029	4"	971	765	890	34	170	13	3"	31	211/G



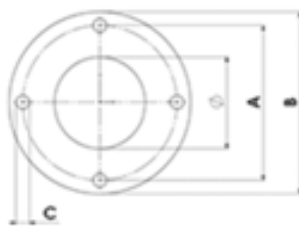
HYDRAULIC SWIVEL



MANUAL SWIVEL



	NOZZLE DIAMETER (mm)	PRESSURE (bar)	CAPACITY (l/min)	JET LENGTH 30° (m)	JET LENGTH 45° (m)
SWIVEL 3"	25-34	5	1600	56	65
SWIVEL 3"	25-34	6	1750	59	69
SWIVEL 3"	25-34	7	1900	62	72
SWIVEL 3"	25-34	8	2020	65	75
SWIVEL 4"	34	5	1800	58	67
SWIVEL 4"	34	6	1960	61	71
SWIVEL 4"	34	7	2100	64	74
SWIVEL 4"	34	8	2260	67	77



CODE	Ø	A	B	C	N. Holes	Thickness	Kg	Article
5010401006	100	170	200	13	4	12	1,4	2003/E



RANGE OIL TEMPERATURE -30° c +60° C
MAX WORKING PRESSURE HYDRAULIC MOTOR 165 bar (2475 psi)
PRESSURE APPLICAT ION 80 bar
MAX OIL CAPACITY 60 l/min.

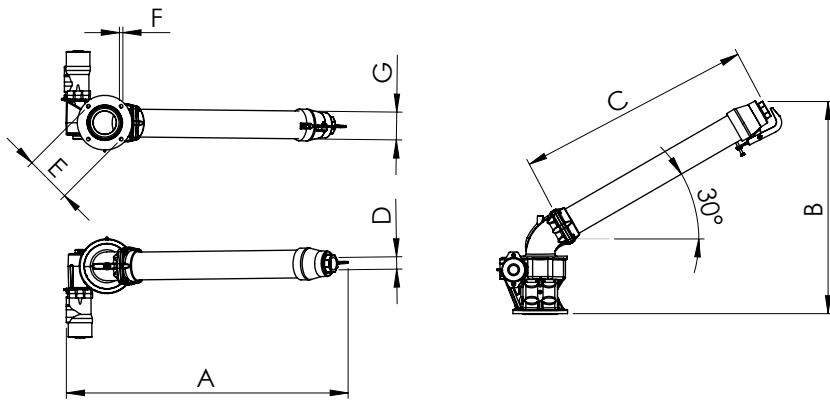
TEMPERATURA AMMISSIBILE DELL'OLIO -30° c +60° C
 PRESSIONE MAX MOTORE IDRAULICO 165 bar CONTINUA (2475 psi)
 PRESSIONE APPLICAZIONE 80 bar
 PORTATA MAX OLIO 60 l/min. CONTINUA

CODE	Model	Hydraulic Swivel Joint RPM	Kg	Article
5020400011	HYDRAULIC SWIVEL	7	5.9	2601

ULÄSSIGE ÖLTEMPERATUR -30° c +60° C
 MAX DRUCK DES HYDRAULIKES MOTORS 165 bar DAUERND (2475 psi)
 ANWENDUNG DRUCK 80 bar
 MAX DURCHFLUSSMENGE ÖL 60 l/min. DAUERND

HD SWIVEL CAST IRON PIPE WITH FLANGE Ø 4" - 5"

GETTO GIREVOLE FLANGIATO HD
REGNER MIT FLANSCH HD



FEATURES

- HIGH RESISTANCE SPHEROIDAL CAST-IRON
- SUPPLIED WITH 1 O-RINGS FOR COUPLING
- EASY GREASING
- ROTATION OF 360°
- BREAK-SEWAGE
- GALVANIZED PIPE
- HYDRAULIC SWIVEL
- HYDRAULIC MOTOR STANDARD
- COVERED SPROCKET
- GUIDE WITH TWO ROUNDS OF BALLS

CARATTERISTICHE

- GHISA SFEROIDALE AD ALTA RESISTENZA
- FORNITURA CON 1 O-RING PER ACCOPPIAMENTO
- INGRASSAGGIO AGEVOLE
- ROTAZIONE DI 360°
- FRANGIGETTO DI SERIE
- TUBO ZINCATO
- GETTO IDRAULICO
- MOTORE IDRAULICO STANDARD
- CORONA DENTATA COPERTA
- GUIDA CON DUE GIRI DI SFERE

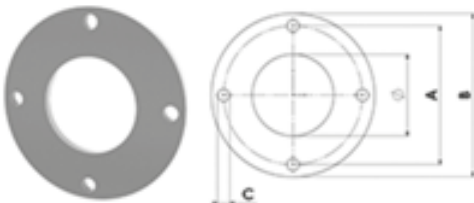
EIGENSCHAFTEN

- HOCH WIDERSTANDSFÄHIGES SPHÄROLITISCHES GUSSEISEN
- GELIEFERT MIT 1 O-RING FÜR KOPPLUNG
- BEQUEMES SCHMIEREN
- DREHUNG UM 360°
- WASSERHAHNAUFSATZ SERIENMÄSSIG
- VERZINKTE LEITUNG
- AUSFÜHRUNGEN: HYDRAULISCH
- HYDRAULIKMOTOREN ALS SERIE
- VERDECKTES KETTENRAD
- FÜHRUNG MIT ZWEI RUNDEN

DIMENSION HYDRAULIC SWIVEL - HD

CODE	Ø	A	B	C	D	E	F	G	Kg	Article
6100300031	4"	1030	775	860	34	170	13	3"	45	212/F
6100300030	5"	1030	775	860	45	170	13	3" 1/2	47,5	212/G

	NOZZLE DIAMETER (mm)	PRESSURE (bar)	CAPACITY (l/min)	JET LENGTH 30° (m)
SWIVEL 4" HD	34	5	1800	58
SWIVEL 4" HD	34	6	1960	61
SWIVEL 4" HD	34	7	2100	64
SWIVEL 4" HD	34	8	2260	67
SWIVEL 5" HD	45	5	2943	64
SWIVEL 5" HD	45	6	3224	70
SWIVEL 5" HD	45	7	3482	76
SWIVEL 5" HD	45	8	3723	81



CODE	Ø	A	B	C	N. Holes	Thickness	Kg	Article
5010401006	100	170	200	13	4	12	1,4	2003/E

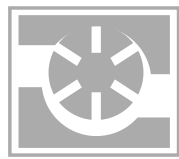


CODE	Model	Hydraulic Swivel Joint RPM	Kg	Article
5020400011	HYDRAULIC SWIVEL	7	5.9	2601

RANGE OIL TEMPERATURE -30° c +60° C
MAX WORKING PRESSURE HYDRAULIC MOTOR 165 bar (2475 psi)
PRESSURE APPLICATION 80 bar
MAX OIL CAPACITY 60 l/min.

TEMPERATURA AMMISSIBILE DELL'OLIO -30° c +60° C
PRESSIONE MAX MOTORE IDRAULICO 165 bar CONTINUA (2475 psi)
PRESSIONE APPLICAZIONE 80 bar
PORTATA MAX OLIO 60 l/min. CONTINUA

ULÄSSIGE ÖLTEMPERATUR -30° c +60° C
MAX DRUCK DES HYDRAULIKES MOTORS 165 bar DAUEREND (2475 psi)
ANWENDUNG DRUCK 80 bar
MAX DURCHFLUSSMENGE ÖL 60 l/min. DAUEREND



Battioni®

Pagani

Setting the pace since 1953



**Battioni®
Pagani**

Setting the pace since 1953

Battioni Pagani Pompe S.p.A.

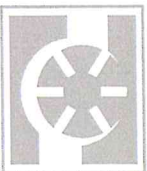
Via Cav. Enzo Ferrari, 2
43058 Ramoscello di Sorbolo (PR) - Italy

Ph. +39 0521 663203

Fax +39 0521 663206

www.bapag.it
info@bapag.it

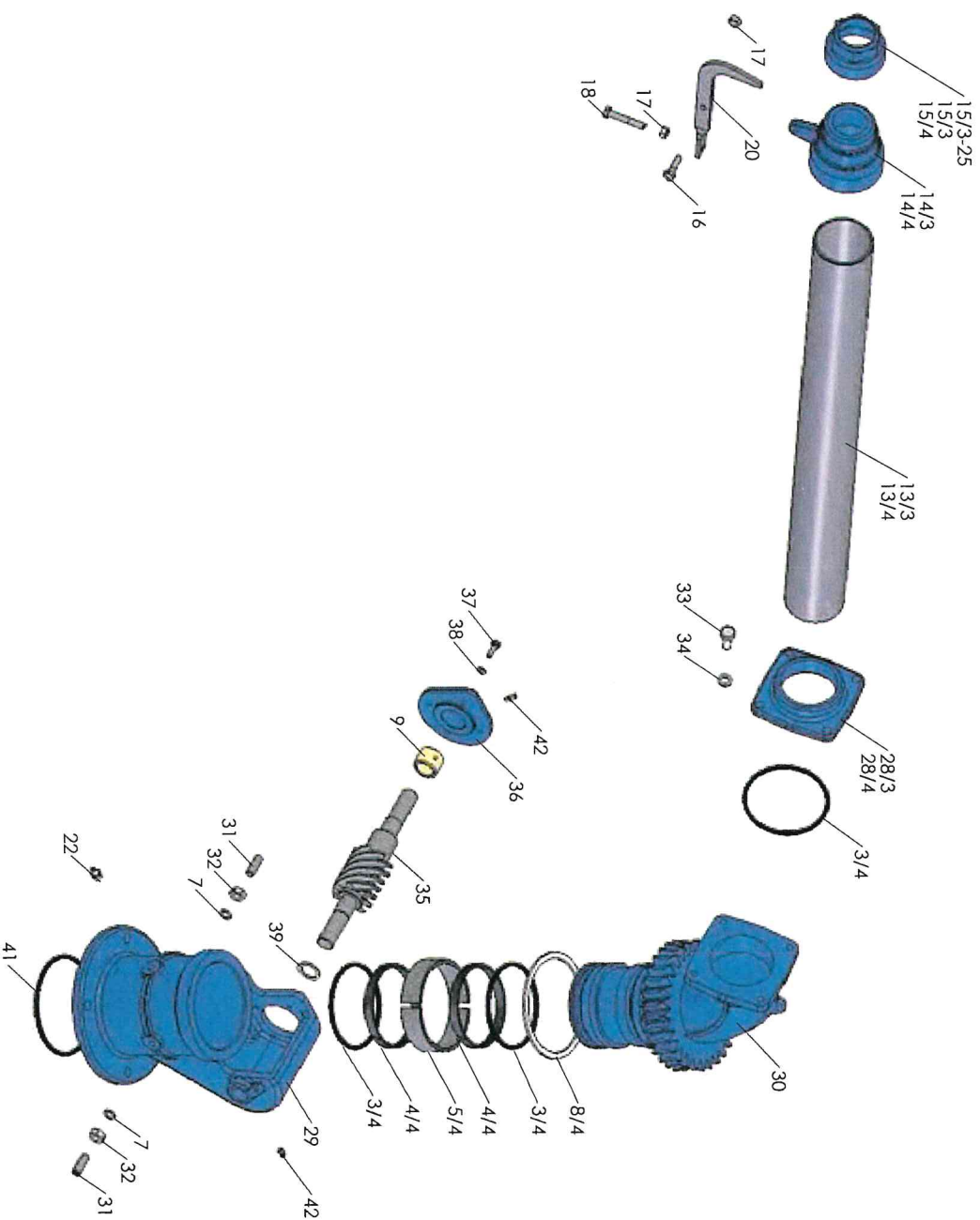




Battioni®
Pagani

3" - 4" MANUAL SWIVEL CAST IRON PIPE WITH FLANGE

Rel. 0 del 15.01.2018

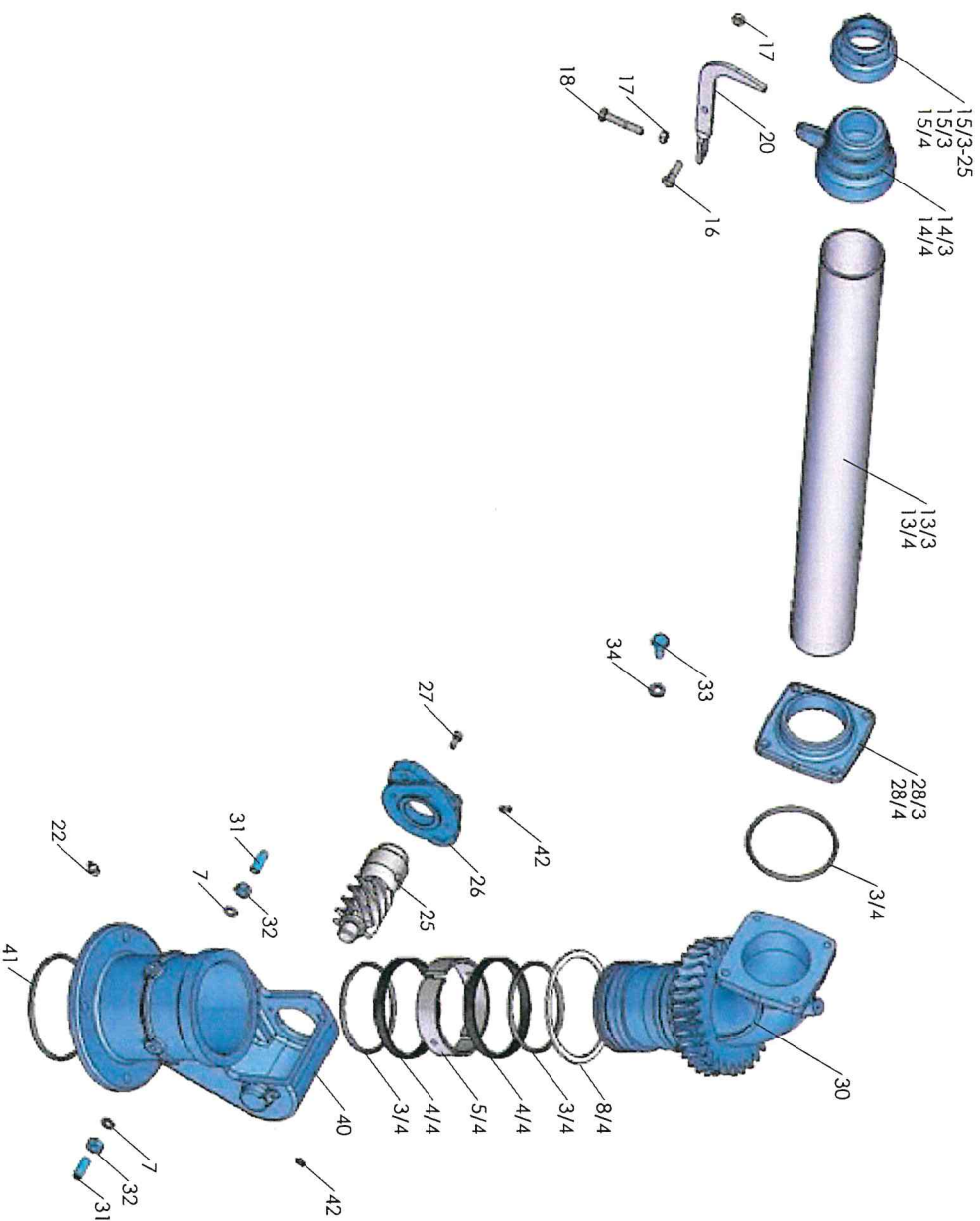


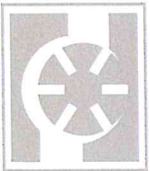


Battioni®
Pagani

3" - 4" HYDRAULIC SWIVEL CAST IRON PIPE WITH FLANGE

Rel. 0 del 15.01.2018

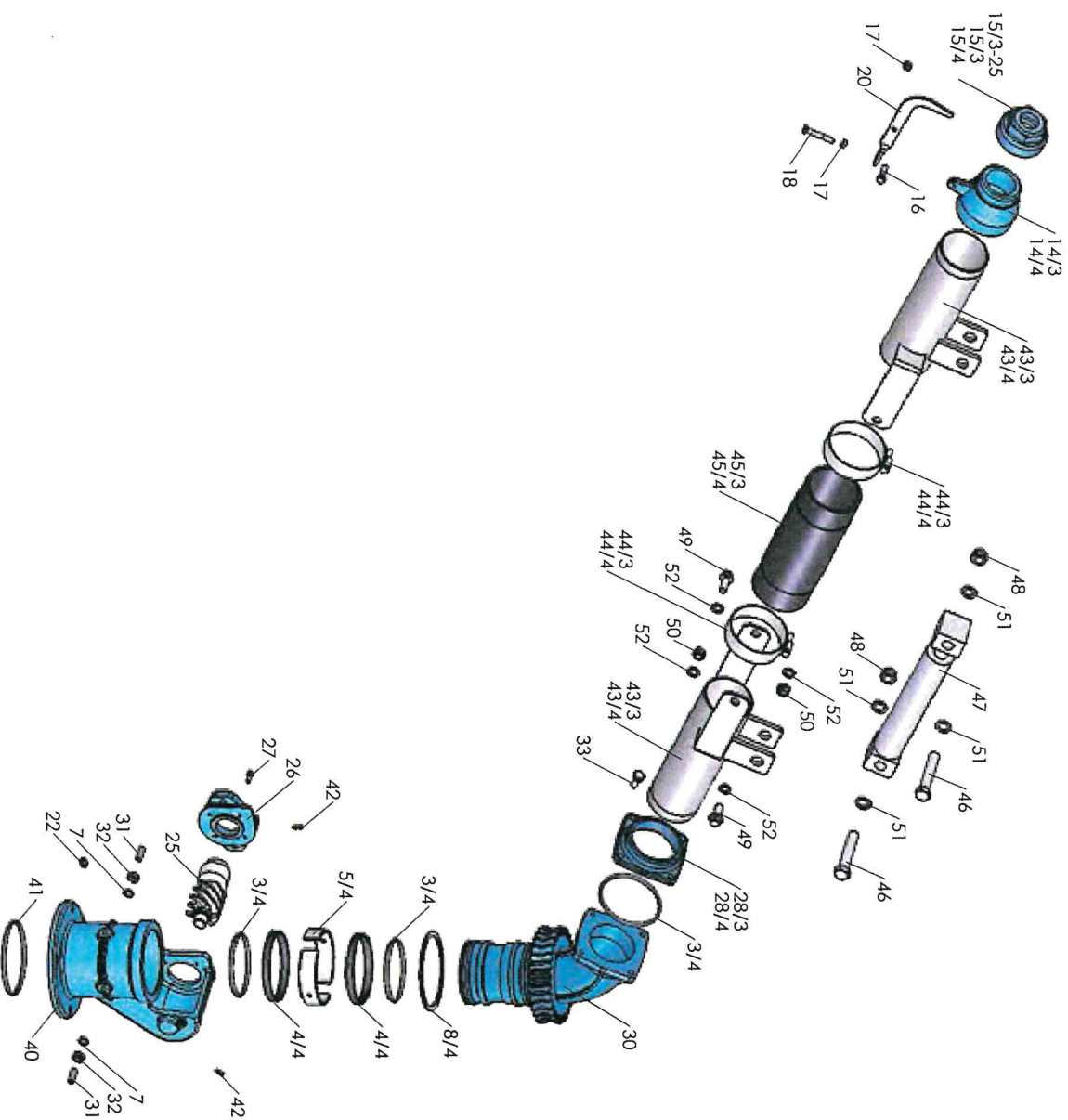


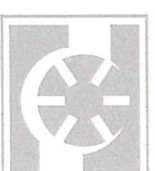


Battioni®
Pagani

3" - 4" HYDRAULIC SWIVEL CAST IRON PIPE WITH FLANGE ADJUSTABLE

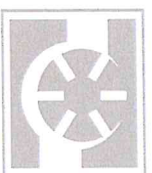
Rel. 0 del 15.01.2018





SWIVEL GUN

Articolo (Article)	Codice (Code)	Descrizione	(Description)	Qty	Um
3/4	5030210008	ANELLO TENUTA OR 189 STAR UL	SEAL RING - OR 189 STAR UL	3	pcs
4/4	5060205002	ANELLO GUIDA EDWR/AGE 110	DRIVING RING - EDWR/AGE 110	2	pcs
5/4	4011806002	ANELLO FISSAGGIO GETTO 3-4"	FASTENER RING - PIPE 3-4"	2	pcs
7	5050202002	RONDELLA D 10X16X1,5 ALLUMINIO	ALUMINIUM WASHER - D 10X16X1,5	2	pcs
8/4	5060205004	ANELLO STRISCIAMENTO GETTO 4"	SLIDING RING - GETTO"	1	pcs
9	4011704001	BOCCOLA D 32X22X25 GETTO GIREVOLE	BUSH - D 32X22X25 SWIVEL PIPE	1	pcs
13/3	4011806003	TUBO TRAFILATO D 2"1/2X750 GETTO 3"	DRAWN HOSE - D 2"1/2X750 PIPE 3"	1	pcs
13/4	4011806004	TUBO TRAFILATO D 3"X750 GETTO 4"	DRAWN HOSE - D 3"X750 PIPE 4"	1	pcs
14/3	4010001001	PORTAUGELLO GETTO 3"	NOZZLE HOLDER - SWIVEL GUN 3"	1	pcs
14/4	4010001003	PORTAUGELLO GETTO 4"	NOZZLE HOLDER - SWIVEL GUN 4"	1	pcs
15/3	4010001002	UGELLO GETTO 3"	NOZZLE - SWIVEL GUN 3"	1	pcs
15/3-25	4010001005	UGELLO GETTO 3" - FORO D 25	NOZZLE - SWIVEL GUN 4" - HOLE 25MM	1	pcs
15/4	4010001004	UGELLO GETTO 4"	NOZZLE - SWIVEL GUN 4"	1	pcs
16	5050107048	VITTE M 8X30 TE ZINCATI	GALVANIZED SCREW - M 8X30 TE	1	pcs
17	5050307007	DADO M 8 ZINCATO	NUT - M 8 GALVANIZED	2	pcs
18	5050107013	VITTE M 8X50 TE ZINCATI - TUTTO FILETTO -	GALVANIZED SCREW - M 8X50 TE	1	pcs
20	4010006004	FRANGIGETTO GETTO GIREVOLE	BREAK-SEWAGE - SWIVEL GUN	1	pcs
22	5050812003	INGRASSATORE M 10X1.5	LUBRICATOR - M 10X1.5	1	pcs
25	4020006003	VITTE SENZA FINE GETTO IDRAULICO	WORM - PIPE HYDRAULIC	1	pcs
26	4010406006	FLANGIA COLLEG. MOT. IDR. GETTO GIREVOLE	HYDR. MOTOR CONN. FLANGE - SWIVEL PIPE	1	pcs



Battioni®
Pagani

catalogo ricambi
spare parts catalogue
Rev. 0 del 15.01.2018

SWIVEL GUN

Articolo (Article)	Codice (Code)	Descrizione	(Description)	Qty	Um
27	5050107008	VITTE M 6X16 TCEI	SCREW - M 6X16 TCEI	1	pcs
28/3	4010601080	COPERCHIO PORTATUBO GETTO 3"	HOSE-HOLDER COVER - GETTO 3"	1	pcs
28/4	4010601079	COPERCHIO PORTATUBO GETTO 4"	HOSE-HOLDER COVER - GETTO 4"	1	pcs
29	4011001015	SUPPOTO GETTO 3-4" MANUALE	SUPPORT - MANUAL SWIVEL PIPE 3-4"	1	pcs
30	4010101033	CORPO GIREVOLE - GETTO	REVOLVING BODY - PIPE 4"	1	pcs
31	5051007003	GRANO M 10X30 P.CIL.	DOWEL - M 10X30 P.P.	2	pcs
32	5050307003	DADO M 10	NUT - M 10	2	pcs
33	5050107020	VITTE M 10X25 TE	SCREW - M 10X25 TE	4	pcs
34	5050207004	RONDELLA D 10	SMOOTH WASHER - D 10	4	pcs
35	4020006002	VITTE SENZA FINE GETTO MANUALE	WORM - PIPE MANUAL	1	pcs
36	4010406005	FLANGIA CHIUSURA GETTO GIREVOLE	GRIPPING FLANGE - SWIVEL PIPE	1	pcs
37	5050107006	VITTE M 6X20 TE	SCREW - M 6X20 TE	4	pcs
38	5050207002	RONDELLA D 6	SMOOTH WASHER - D 6	4	pcs
39	5050207013	RONDELLA D 30X22X2 OTTONE	BRASS KASHER - D 30X22X2	1	pcs
40	4011001020	SUPPOTO GETTO 3-4" IDRAULICO	SUPPORT - HYDRAULIC SWIVEL PIPE 3-4"	1	pcs
41	5030210014	ANELLO TENUTA OR 199 GETTO 4"	SEAL RING - OR 199 GETTO 4"	1	pcs
42	5050812004	INGRASSATORE M 6X1	LUBRICATOR - M 6X1	2	pcs
43/3	4011806025	TUBO GETTO GIREVOLE REG.ALTEZZA 3"	PIPE FOR ADJUSTABLE GUN 3"	2	pcs
43/4	4011806026	TUBO GETTO GIREVOLE REG.ALTEZZA 4"	PIPE FOR ADJUSTABLE GUN 4"	2	pcs
44/3	5100706003	FASCETTA STRINGITUBO D 80	CLAMP - D 80	2	pcs



SWIVEL GUN

Articolo (Article)	Codice (Code)	Descrizione	(Description)	Qty	Um
44/4	5100706010	FASCETTA STRINGITUBO D 110	CLAM - D 110	2	pcs
45/3	4011707080	TUBO GOMMA FLESSIBILE GETTO REG.H 3"	FLEXIBLE HOSE ADJ. GUN 3"	1	pcs
45/4	4011707081	TUBO GOMMA FLESSIBILE GETTO REG.H 4"	FLEXIBLE HOSE ADJ. GUN 4"	1	pcs
46	5050107128	VITE ZINCATA M 18X100 TE	SCREW - M 18X100 TE GALVANIZED	2	pcs
47	5090000080	CILINDRO IDR. DA GETTO REG. ALT. (H S)	HYDRAULIC CYLINDER - SWIVEL GUN	1	pcs
48	5050300015	DADO AUTOBLOCCANTE M 18	SELF-LOCKING NUT M 18	2	pcs
49	5050107127	VITE ZINCATA M 12X30 TE	SCREW - M 12X30 TE GALVANIZED	2	pcs
50	5050300013	DADO AUTOBLOCCANTE M 12 BASSO - DIN 985	SELF-LOCKING NUT M 12	2	pcs
51	5050207026	RONDELLA D 18 ZINCATA	FLAT WASHER - D 18	4	pcs
52	5050207025	RONDELLA D 12 ZINCATA	GALVANIZED FLAT WASHER - D 12	4	pcs