

art. 3075

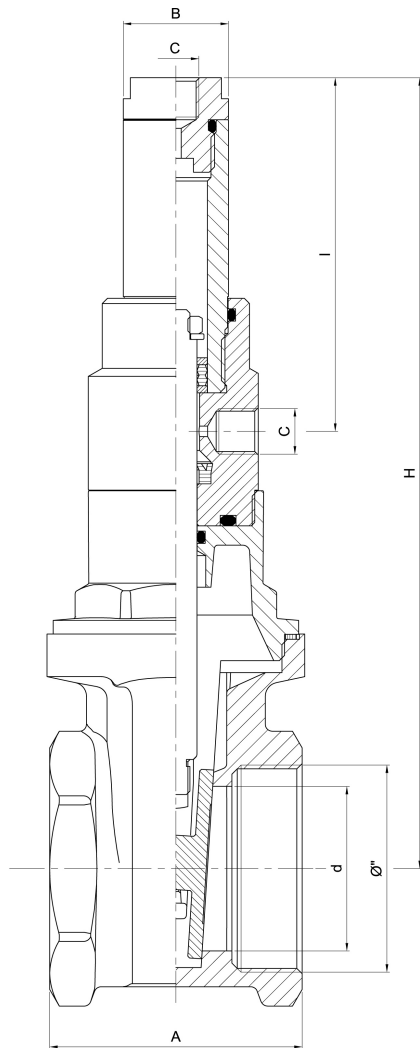
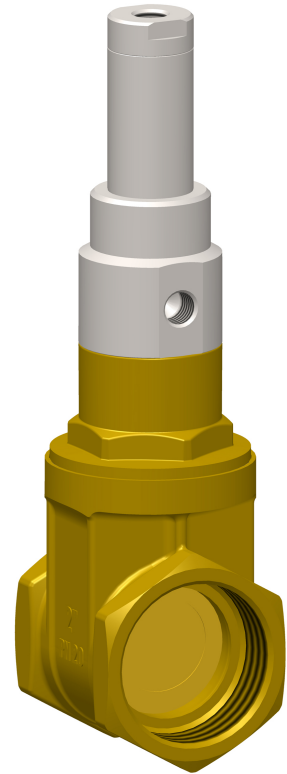
Saracinesca oleodinamica

Double acting oildynamic gate valve

Vanne oléodynamique à double effet

Doppelwirkender oldynamischer Schieber

Tajadera hidráulica de doble efecto



Ø"	2"	3"	4"
A	72	85	97
B	30	30	30
C	1/4"G	1/4"G	1/4"G
d	47	70	94
I	101	120	152
H	226	282	355

Codici di ordinazione

Purchase article numbers

2"

3"

4"

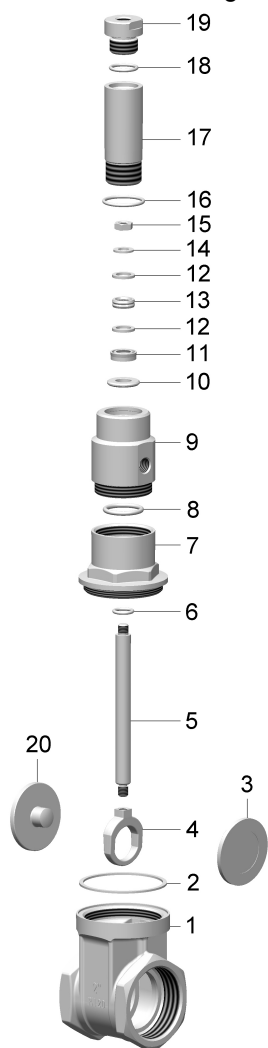
Saracinesca oleodinamica a doppio effetto
Double acting oildynamic gate valve

ARIN 3075 050 000

ARIN 3075 080 000

ARIN 3075 100 000

zootechnics-ecology / zootechnie-écologie
Tierhaltung-Ökologie / acessórios para cisterna



Condizioni di esercizio
Work conditions

DN	2" - 3" - 4"
P (bar)	20
P (PSI)	290
T °C	-15 +80

Condizioni di esercizio cilindro
Cylinder work conditions

DN	2" - 3" - 4"
P (bar)	max 200
P (PSI)	max 2.900
T °C	-15 +80

POS	CODICE / CODE	DENOMINAZIONE	DENOMINATION	MATERIALE	MATERIAL
1	SOIN 3074 050 001	CORPO 2"	BODY 2"	OTTONE UNI EN 12165	UNI EN 12165 BRASS
1	SOIN 3074 080 001	CORPO 3"	BODY 3"	OTTONE UNI EN 12165	UNI EN 12165 BRASS
1	SOIN 3074 100 001	CORPO 4"	BODY 4"	OTTONE UNI EN 12165	UNI EN 12165 BRASS
2	GGUA 3074 (DN) 004	GUARNIZIONE Ø"...	GASKET Ø"...	GUAMOTOR	GUAMOTOR
3	TOIN 3074 050 02B	DISCO FEMMINA 2"	FEMALE DISC 2"	OTTONE UNI EN 12164	UNI EN 12164 BRASS
3	FOIN 3074 080 02B	DISCO FEMMINA 3"	FEMALE DISC 3"	OTTONE UNI EN 1982	UNI EN 1982 BRASS
3	SOZO 0030 100 02B	DISCO FEMMINA 4"	FEMALE DISC 4"	OTTONE UNI EN 12165	UNI EN 12165 BRASS
4	SOIN 3074 050 006	TERMINALE ASTA	STEM TERMINAL	OTTONE UNI EN 12165	UNI EN 12165 BRASS
5	TAIN 3075 (DN) 003	ASTA Ø12 Ø"...	STEM Ø12 Ø"...	ACCIAIO INOX AISI 304	AISI 304 STAINLESS STEEL
6	..OR 1130 010 007	OR 115 (Øi 11,91×2,62)	O RING 115 (Øi 11,91×2,62)	GOMMA NBR	NBR RUBBER
7	SOIN 3075 (DN) 005	VITONE Ø"...	TOP SCREW Ø"...	OTTONE UNI EN 12165	UNI EN 12165 BRASS
8	..OR 3074 050 012	OR 4100 (Øi 24,99×3,53) 2"	O RING 4100 (Øi 24,99×3,53) 2"	GOMMA NBR	NBR RUBBER
8	..OR 3074 050 010	OR 4131 (Øi 32,93×3,53) 3"-4"	O RING 4131 (Øi 24,99×3,53) 3"-4"	GOMMA NBR	NBR RUBBER
9	CILI 3075 050 009	TESTATA 2"	HEAD 2"	ACCIAIO ZINCATO	ZINC PLATED STEEL
9	CILI 3075 080 009	TESTATA 3"-4"	HEAD 3"-4"	ACCIAIO ZINCATO	ZINC PLATED STEEL
10	TAIN 3075 050 015	RONDELLA Ø25,8×12,6×3	WASHER Ø25,8×12,6×3	ACCIAIO ZINCATO	ZINC PLATED STEEL
11	GKIT 3075 050 008	GUARNIZIONE A20-12-5,8	GASKET A20-12-5,8	POLIURETANO	POLYURETHANE
12	CILI 3075 050 014	ANELLO Ø18×12×2	RING Ø18×12×2	DELTRIN	DELTRIN
13	GKIT 3075 050 010	GUARNIZIONE OP12-18-6	GASKET OP12-18-6	POLIURETANO	POLYURETHANE
14	ROAC 0250 120 022	RONDELLA Ø16×8,4×1,6	WASHER Ø16×8,4×1,6	ACCIAIO INOX AISI 304	AISI 304 STAINLESS STEEL
15	DAAC 0180 045 012	DADO M8×5	NUT M8×5	ACCIAIO INOX AISI 304	AISI 304 STAINLESS STEEL
16	..OR 0500 100 009	OR 3112 (Øi 28,25×2,62)	O RING 3112 (Øi 28,25×2,62)	GOMMA NBR	NBR RUBBER
17	CILI 3075 (DN) 011	CILINDRO Ø"...	CYLINDER Ø"...	ACCIAIO ZINCATO	ZINC PLATED STEEL
18	..OR 1012 010 011	OR 123 (Øi 17,86×2,62)	O RING 123 (Øi 17,86×2,62)	GOMMA NBR	NBR RUBBER
19	CILI 3075 050 013	CULATTA	COVER	ACCIAIO ZINCATO	ZINC PLATED STEEL
20	TOIN 3074 050 02A	DISCO MASCHIO 2"	MALE DISC 2"	OTTONE UNI EN 12164	UNI EN 12164 BRASS
20	FOIN 3074 080 02A	DISCO MASCHIO 3"	MALE DISC 3"	OTTONE UNI EN 1982	UNI EN 1982 BRASS
20	SOIN 3074 100 02A	DISCO MASCHIO 4"	MALE DISC 4"	OTTONE UNI EN 12165	UNI EN 12165 BRASS