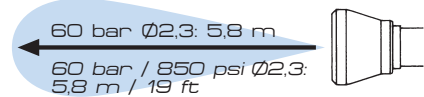
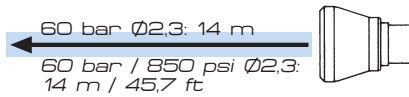




"TURBINE" - "TURBINE" SH



◀ PAGE 06/22 ▶



- 7.901.103** standard con ugello M15x1 Ø2.3 - attacco G1/2M.
7.901.103 TG standard con ugello M15x1 Ø2.3 - raccordo girevole G1/2M. - tracolla
7.901.34 standard con ugello M15x1 Ø2.3 - attacco G1/2M.

Foro max. ugello: Ø4.5
 Pressione di esercizio max.: 60 bar
 Peso: 7.901.103 1.5 kg - 7.901.34 1.3 kg
 Lunghezza: 7.901.103 600 mm - 7.901.34 420 mm

Materiali: ottone - acciaio inox - materiali plastici ad alta resistenza.

Impiego: **7.901.103** - trattamenti antiparassitari di colture a medio ed alto fusto. Lavaggio delle attrezzature agricole. Lavaggio industriale fino a 60°C. Angolo di spruzzo regolabile con l'impugnatura anteriore che può contenere un ugello di ricambio. Nebulizzazione precisa, gittata, portata, robustezza e versatilità d'impiego. Ugello protetto dagli urti. **7.901.34** - lavaggio delle attrezzature agricole. Lavaggio industriale fino a 60°C. Trattamenti antiparassitari. Altre caratteristiche come 7.901.103.

- 7.901.103** standard with M15x1 spray tip Ø2.3 - 1/2" BSPM. connection
7.901.103 TG standard with 1/2" BSPM swivel connection and shoulder belt
7.901.34 standard with M15x1 spray tip Ø2.3 - 1/2" BSPM. connection

Max. spray tip hole: Ø4.5
 Max operating pressure: 60 bar (870 psi)
 Weight: 7.901.103 1.5 kg (3.3 lb) - 7.901.34 1.3 kg (2.9 lb)
 Length: 7.901.103 600 mm (24") - 7.901.34 420 mm (16.5")

Materials: brass - stainless steel - high resistance plastic materials

Use: **7.901.103** - medium and tall trees high pressure spraying. Washing up to 140°F. Front handle, for easy spray adjustment, can hold a spare spray tip. Accurate nebulization, long throw, flow rate, sturdiness and application versatility. Spray tip shock proof protection. **7.901.34** - washing up to 140°F. and high pressure spraying. Other features like 7.901.103

COME SI ORDINA / HOW TO ORDER

CODICE code		KIT RICAMBIO spare parts kit
7.901.103	10	7.302.1
7.901.103 TG	-	7.302.1
7.901.34	2	7.302.1



LANCE
SPRAY GUNS



M 15X1



GIUNTI
HOSE SHANKS



LUNGA GITTATA
LONG RANGE



CATALOGHI
CATALOGUES

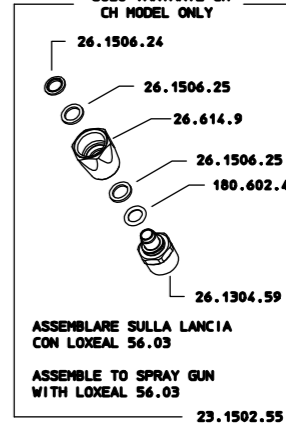
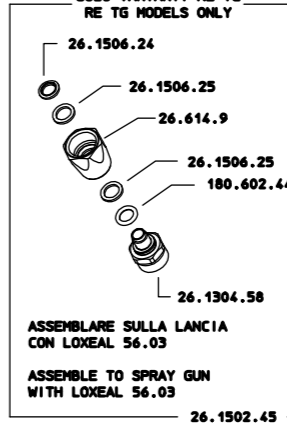
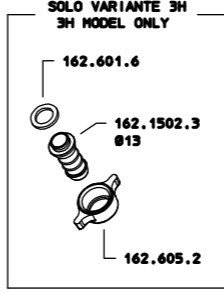
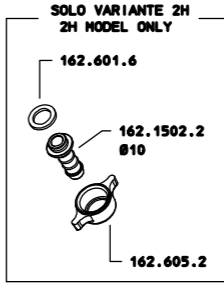
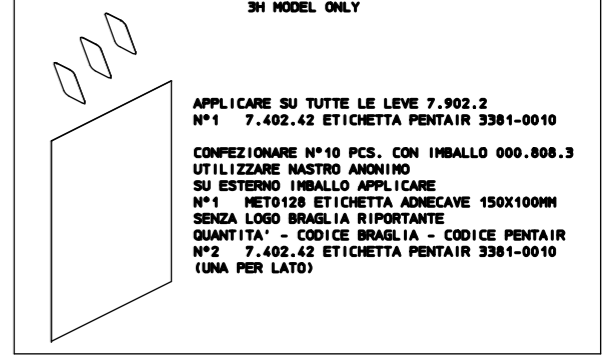
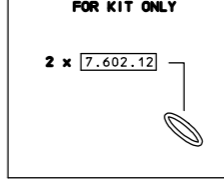
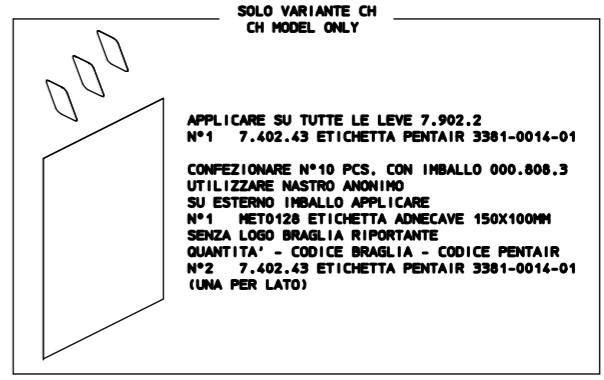
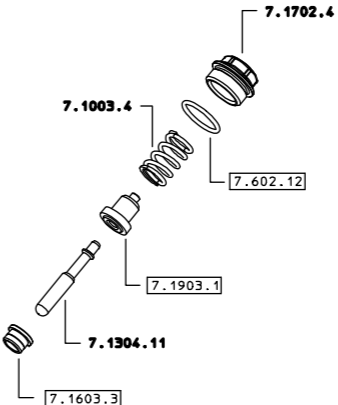
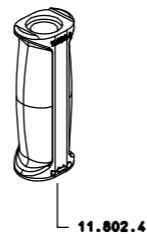
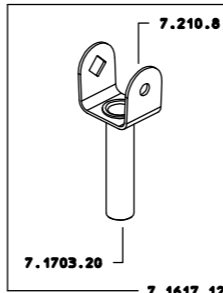
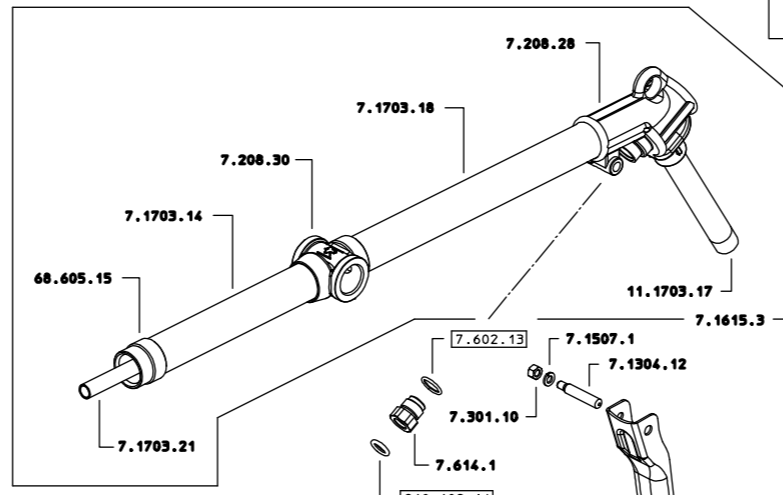
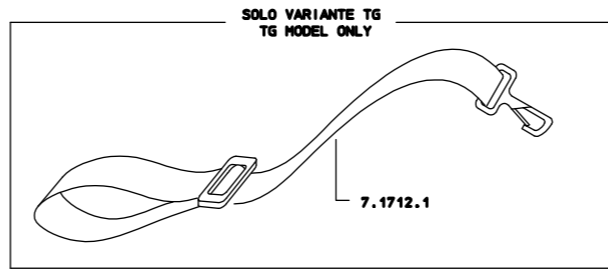
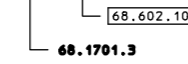
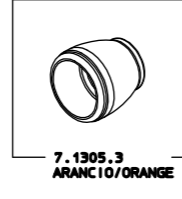
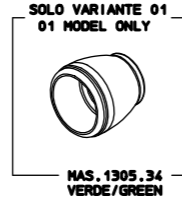
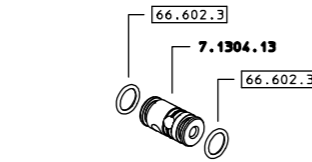
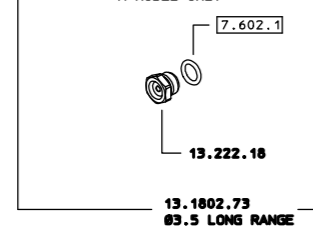
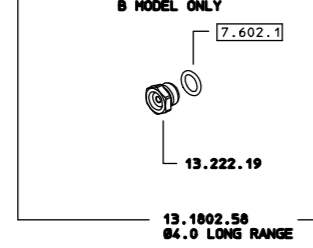
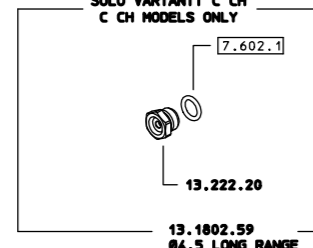
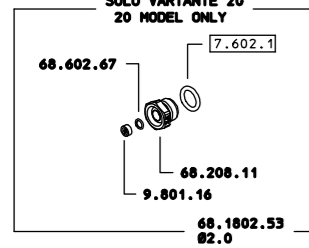
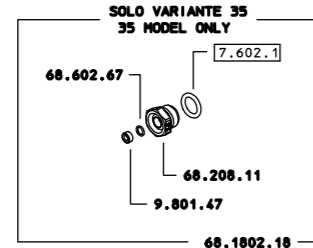
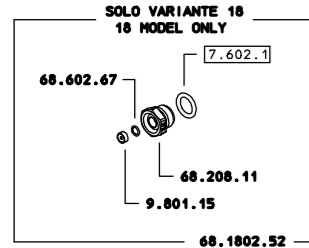
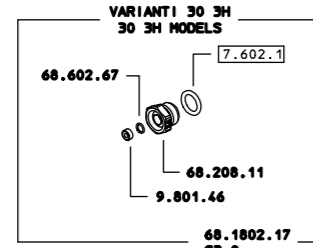
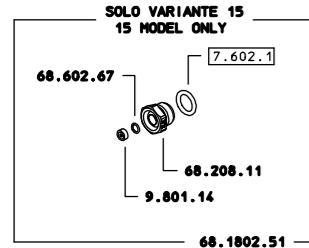
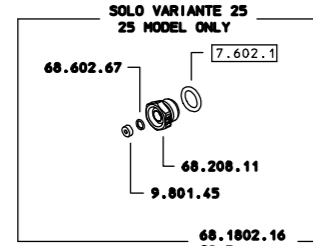
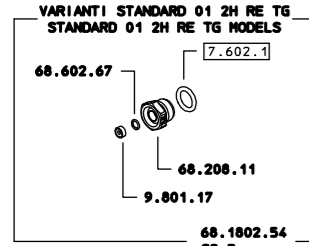


RICAMBI
SPARE PARTS :

7.901.34
7.901.103

7.901.103

7.901.103 01 7.901.103 15 7.901.103 18 7.901.103 20 7.901.103 25
 7.901.103 30 7.901.103 35 7.901.103 A 7.901.103 B 7.901.103 C
 7.901.103 CH 7.901.103 2H 7.901.103 3H 7.901.103 RE 7.901.103 TG



COME SI ORDINA/HOW TO ORDER
Kit ricambio
Spare parts kit **7.302.1**