

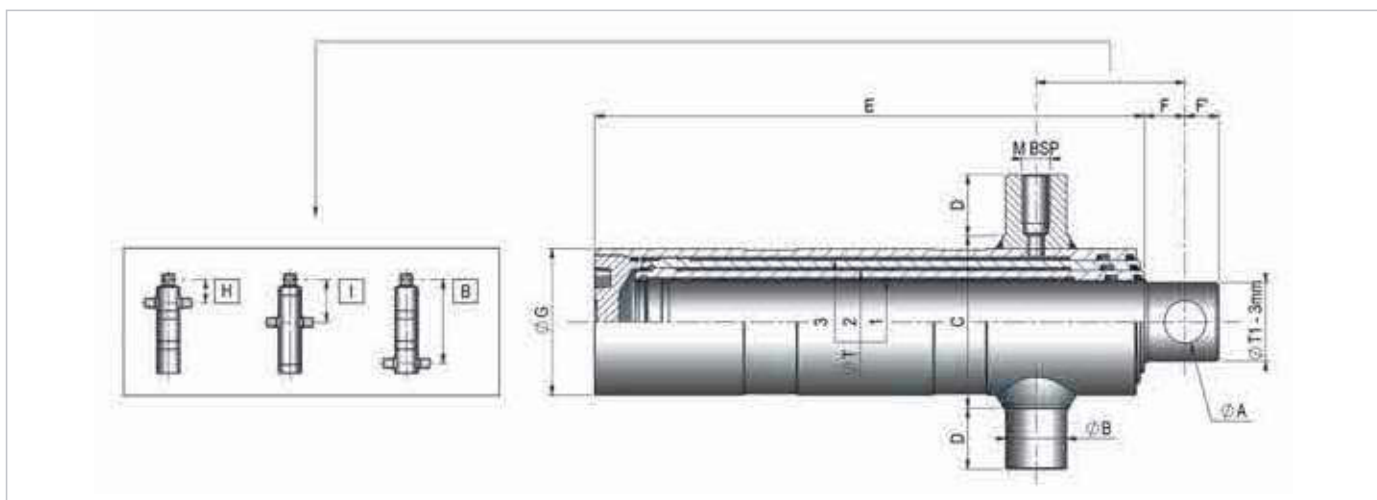
# VÉRIN HYDRAULIQUE TÉLESCOPIQUE

TELESCOPIC HYDRAULIC CYLINDER  
HYDRAULISCHER TELESKOPZYLINDER

H

## VÉRIN POUR BENNE BASCULANTE : Ø 88 À Ø 170

FOR TIPPER - FÜR KIPPER



| Ref.<br>Artikel | ØT1 | ØT2 | ØT3 | ØT4 | ØT5 | Z course<br>Stroke<br>Hub | H   | I   | B    | A  | B  | C   | D  | E   | F  | F' | G   | M    | Vol.<br>(Ltr) | Poids (Kg)<br>Weight<br>Gewicht | Option<br>Cradle n° |
|-----------------|-----|-----|-----|-----|-----|---------------------------|-----|-----|------|----|----|-----|----|-----|----|----|-----|------|---------------|---------------------------------|---------------------|
| 204             | 88  | 107 |     |     |     | 930                       | 107 |     | 584  | 36 | 45 | 148 | 45 | 589 | 40 | 30 | 128 | 1/2G | 7.8           | 41                              | 2                   |
| 313             | 88  | 107 | 126 |     |     | 1260                      | 110 | 200 | 540  | 36 | 45 | 170 | 45 | 545 | 40 | 30 | 150 | 1/2G | 12.6          | 55                              | 3                   |
| 314             | 88  | 107 | 126 |     |     | 1125                      | 110 | 200 | 494  | 36 | 45 | 170 | 45 | 499 | 40 | 30 | 150 | 1/2G | 11.2          | 52                              | 3                   |
| 315             | 88  | 107 | 126 |     |     | 1380                      | 110 | 200 | 579  | 36 | 45 | 170 | 45 | 584 | 40 | 30 | 150 | 1/2G | 13.8          | 58                              | 3                   |
| 316             | 88  | 107 | 126 |     |     | 1710                      | 110 | 200 |      | 45 | 45 | 170 | 45 | 694 | 50 | 35 | 150 | 1/2G | 17.0          | 72                              | 3                   |
| 422             | 88  | 107 | 126 | 147 |     | 1470                      |     | 203 | 494  | 45 | 50 | 198 | 50 | 507 | 50 | 35 | 178 | 1/2G | 17.6          | 77                              | 4                   |
| 423             | 88  | 107 | 126 | 147 |     | 1810                      |     | 203 | 579  | 45 | 50 | 198 | 50 | 592 | 50 | 35 | 178 | 1/2G | 21.7          | 88                              | 4                   |
| 424             | 88  | 107 | 126 | 147 |     | 2250                      |     | 203 |      | 45 | 50 | 198 | 50 | 702 | 50 | 35 | 178 | 1/2G | 27.0          | 103                             | 4                   |
| 525             | 88  | 107 | 126 | 147 | 170 | 1805                      |     | 206 |      | 45 | 50 | 238 | 50 | 510 | 50 | 35 | 204 | 1/2G | 25.8          | 104                             | 5                   |
| 526             | 88  | 107 | 126 | 147 | 170 | 2230                      |     | 206 |      | 45 | 50 | 238 | 50 | 595 | 50 | 35 | 204 | 1/2G | 31.9          | 120                             | 5                   |
| 527             | 88  | 107 | 126 | 147 | 170 | 2780                      |     | 206 |      | 45 | 50 | 238 | 50 | 705 | 50 | 35 | 204 | 1/2G | 39.9          | 140                             | 5                   |
| 528             | 88  | 107 | 126 | 147 | 170 | 2035                      |     | 206 |      | 45 | 50 | 238 | 50 | 556 | 50 | 35 | 204 | 1/2G | 29.0          | 111                             | 5                   |
| 529             | 88  | 107 | 126 | 147 | 170 | 3250                      |     | 206 |      | 45 | 50 | 238 | 50 | 805 | 50 | 35 | 204 | 1/2G | 47            | 151                             | 5                   |
| 540             | 88  | 107 | 126 | 147 | 170 | 2470                      |     | 206 |      | 45 | 50 | 238 | 50 | 643 | 50 | 35 | 204 | 1/2G | 36.0          | 130                             | 5                   |
| 317             | 107 | 126 | 147 |     |     | 1670                      |     | 200 |      | 45 | 50 | 198 | 50 | 699 | 50 | 35 | 178 | 1/2G | 23.2          | 99                              | 4                   |
| 426             |     | 203 |     | 107 | 126 | 147                       | 170 |     | 1760 | 45 | 50 | 238 | 50 | 592 | 50 | 35 | 204 | 1/2  | 29.5          | 116                             | 5                   |
| 425             | 107 | 126 | 147 | 170 |     | 2200                      |     | 203 |      | 45 | 50 | 238 | 50 | 702 | 50 | 35 | 204 | 1/2G | 36.0          | 134                             | 5                   |
| 434             |     | 203 |     | 107 | 126 | 147                       | 170 |     | 2780 | 45 | 50 | 238 | 50 | 849 | 50 | 35 | 204 | 1/2  | 48.5          | 160                             | 5                   |