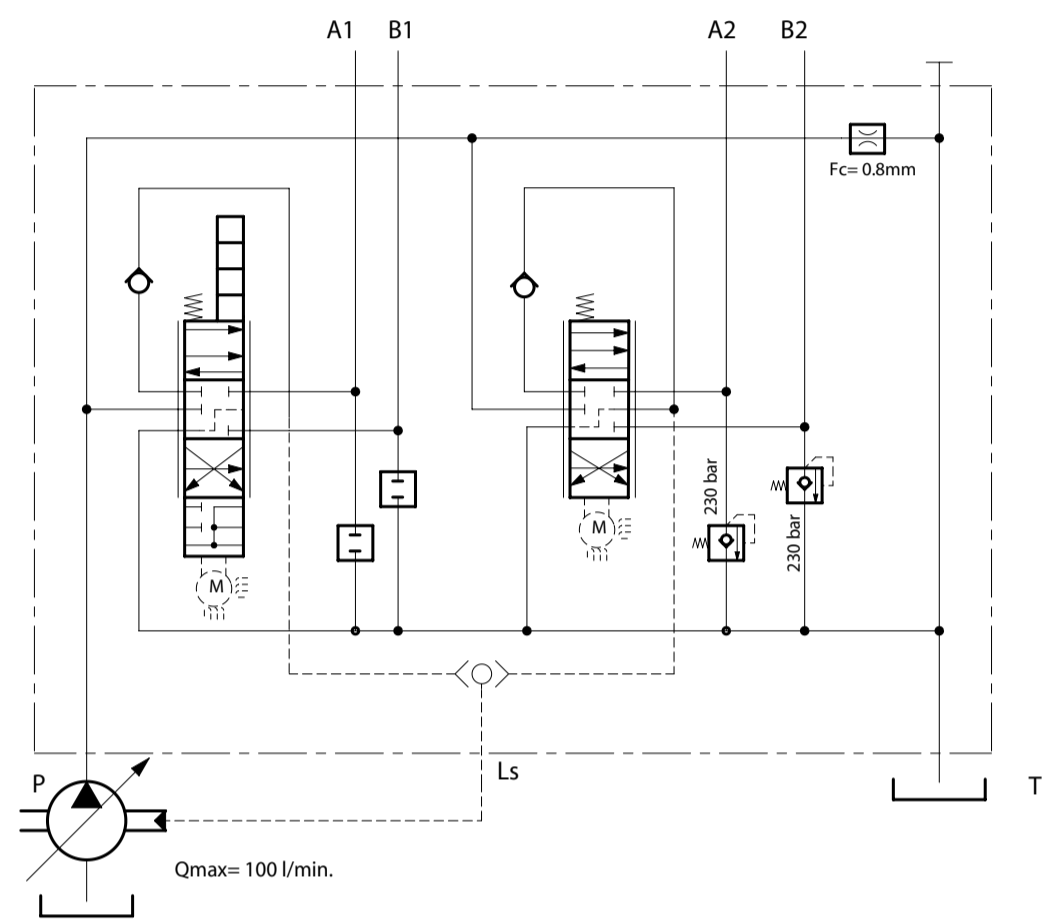


**HYDRAULIC CIRCUIT**



**SPECIFICATIONS**

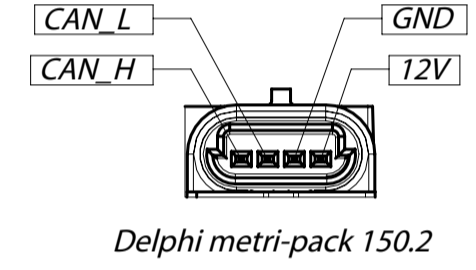
Nominal flow : 80 l/min  
 Max flow : 100 l/min  
 Nominal pressure : 250 bar  
 Max backpressure : 10 bar  
 LS Pump stand-by : 5 to 25 bar  
 Fluid : Mineral based oil  
 Viscosity range : 12 to 400 mm<sup>2</sup>/s  
 Seals material : NBR  
 Oil temperature range : -20 to 80 °C  
 Environmental temperature : -40 to 60 °C  
 Max oil level contamination : 19/16 ISO4406

**TECHNICAL DATA - EME CONTROL**

Force : up to 160N  
 Speed : up to 80 mm/s  
 Residual Force : < 45 N  
 Travel : ± 12 mm  
 Resolution : 0,01 mm/incr.  
 Integrated Electronics Driver : CAN 2.0 B (SAEJ1939)  
 Supply voltage : 9 - 16 VDC  
 Operational temperature : -25 +85°C  
 Max. axial play after life time : < 0.25 mm  
 EMC : ISO 14982  
 IEC 68-2 : Neutral: 210mA  
 Idle: 560mA  
 Motor running: 1700mA (average @ 80mm/s)  
 Peak: 3000mA (peak @ 80mm/s)

**NOTES**

It is recommended to use wires with appropriate length and section, according to the current consumption of the actuators. Otherwise, the voltage drop may reduce the actuator force performance.  
 Parameter such as force, speed or travel may be limited by WST software according to the application.



**TECHNICAL DATA**

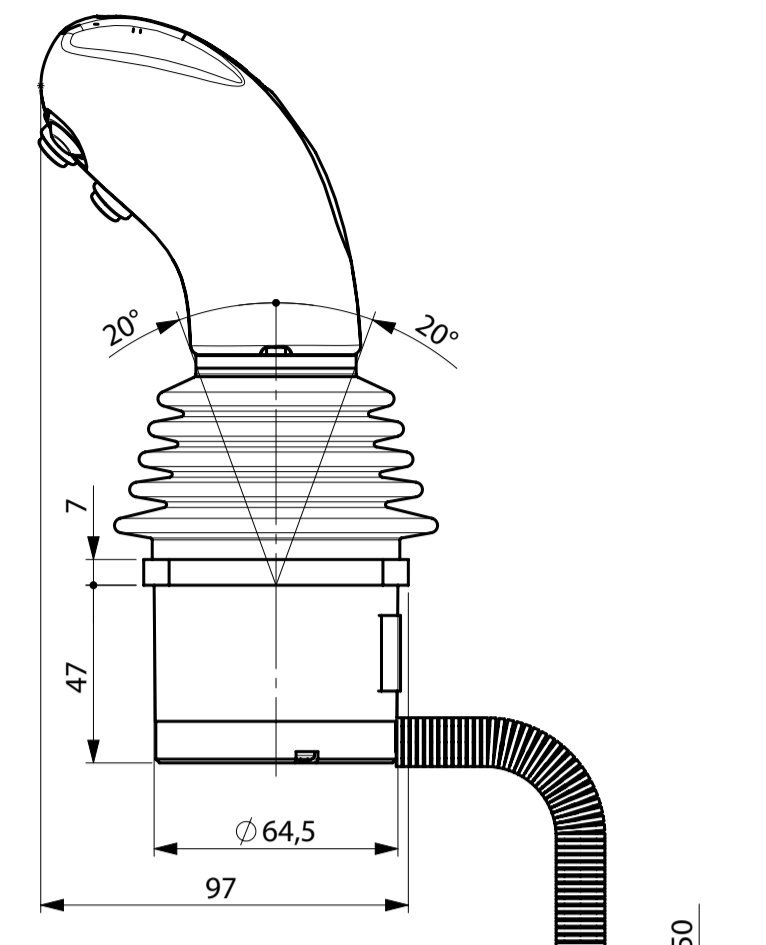
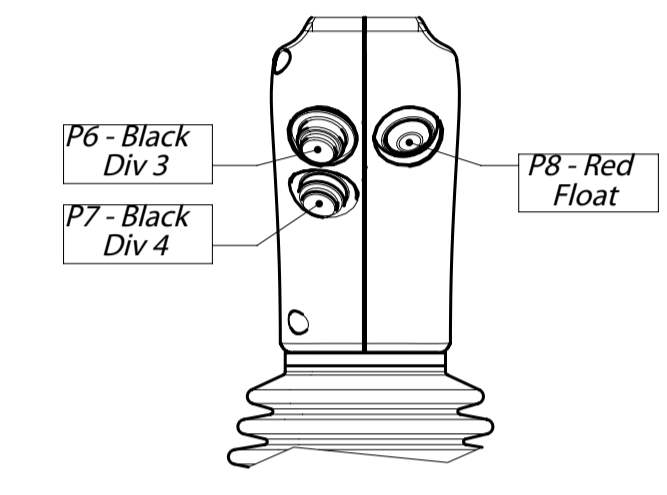
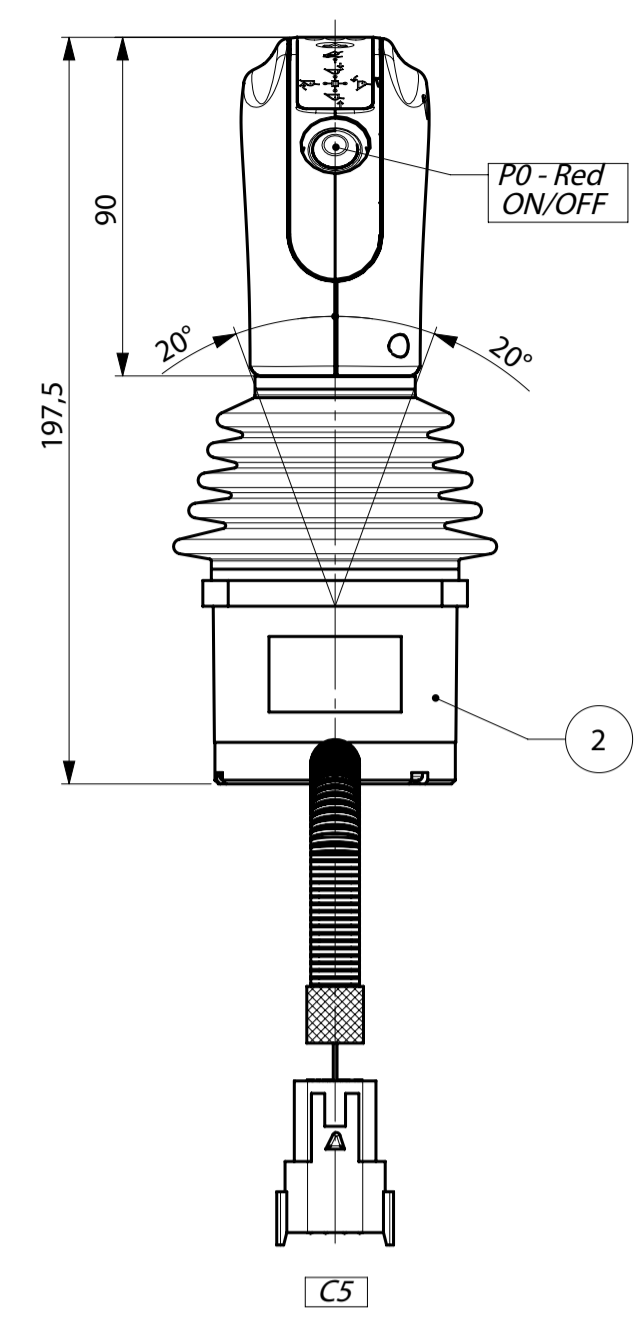
**Electrical Data**  
 Supply voltage range : 8-16V  
 Max supply current : 100 mA (no load)  
 Axis X-Y, X-Y-  
 Signal (full range) : 0.5 - 4.5V  
 Signal (neutral position) : 2.5V  
 Signal Tolerance : ± 200mV in neutral  
 ± 150mV at the end of stroke

**Environmental Data**  
 Working temperature range : -40/+85°C  
 Deflection angle : ±20° ±1°  
 EMC according to ISO 14982 / 13766

**Push-buttons P0-P8**  
 Execution : spring return (P8)-detent (P0)  
 Current rating : 50mA  
 Mechanical life : 1.000.000 cycles  
 Electrical life : 500.000 cycles

**Push-buttons P6-P7**  
 Execution : spring return  
 Current rating : 6A  
 Mechanical life : 50.000 cycles  
 Electrical life : 25.000 cycles

**IMPORTANT**  
 The coils driven by P6,P7 MUST have a free wheeling diode.

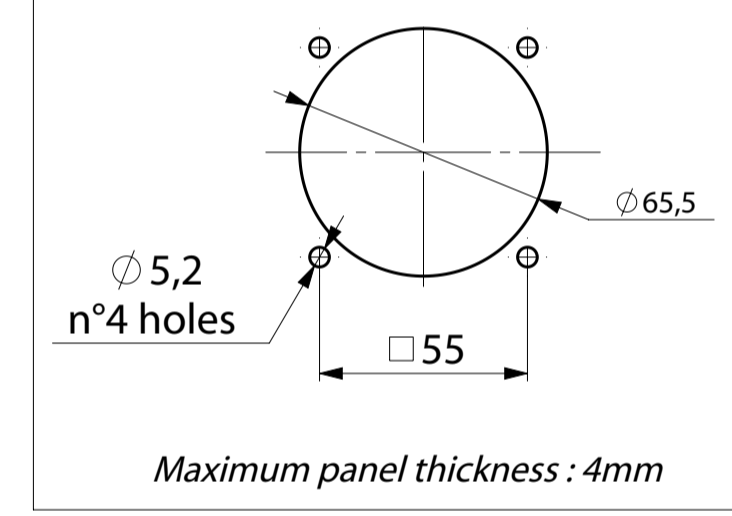


**PIN OUT C5 CONNECTOR**  
 Deutsch DTM04-8P

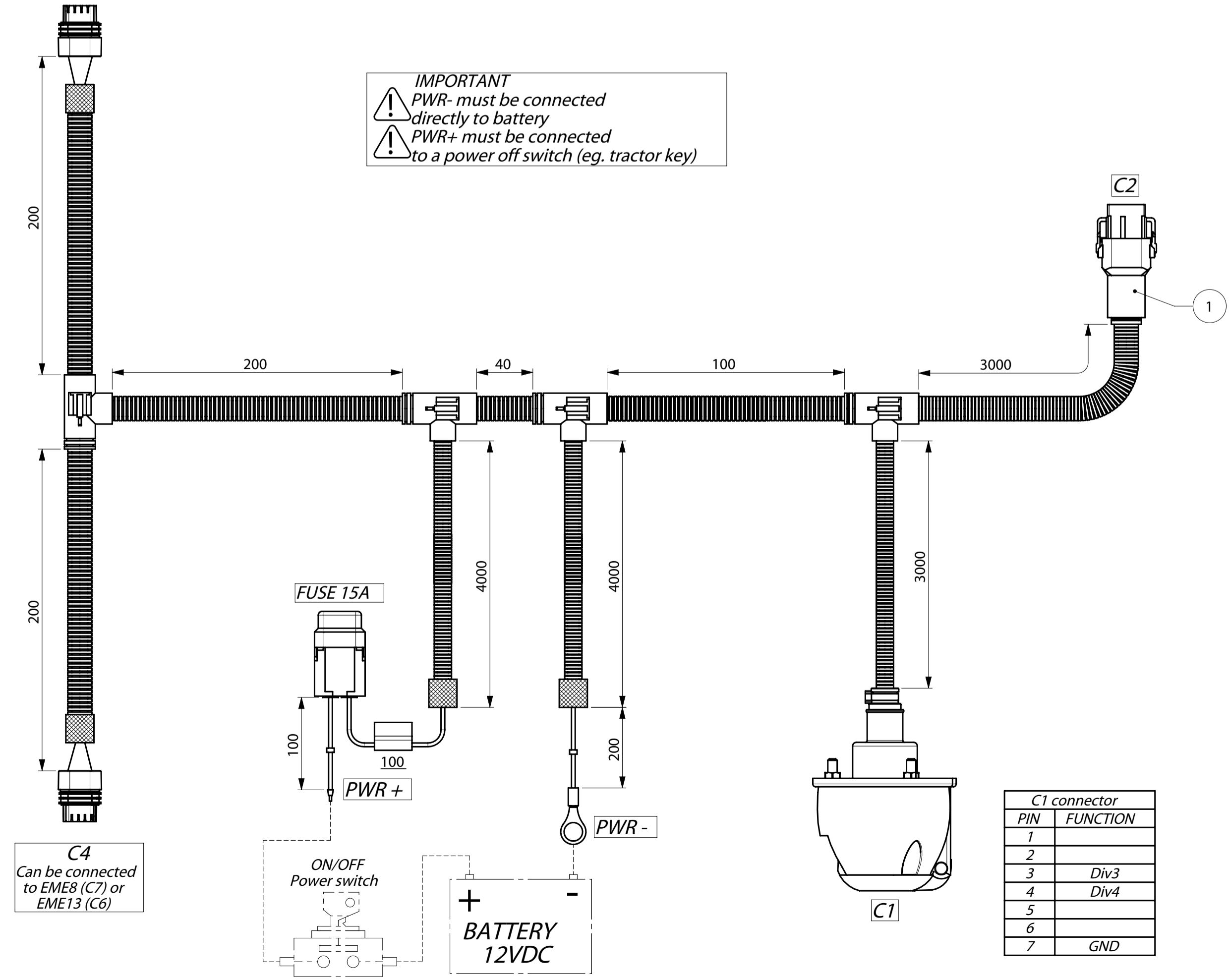


Pin	Functions	Color	Value
1	Vk+	Red	Vbb
2	CAN_L	Green	
3	CAN_H	Yellow	
4	VJ-	Brown	GND
5	P6 (Div 3)	Blue	
6	P7 (Div 4)	White	
7	VJ+	White/Black	Vbb
8		Plug	

**INSTALLATION NOTES**  
 Fixing Hole for joystick



**C3**  
 Can be connected to EME8 (C7) or EME13 (C6)



**IMPORTANT**  
 PWR- must be connected directly to battery  
 PWR+ must be connected to a power off switch (eg. tractor key)

**C4**  
 Can be connected to EME8 (C7) or EME13 (C6)

**C1 connector**

PIN	FUNCTION
1	
2	
3	Div3
4	Div4
5	
6	
7	GND

**FUNCTION DESCRIPTION**  
 -Float function is activated by P8 and Y+ (over 50% of the stroke)  
 -Float is disabled by Y- (over 50% of the stroke).  
 -At start-up red and green led flash 2 times.  
 -P6 directly commands Div3.  
 -P7 directly commands Div4.  
 -When system is ready to work, red led is on.  
 -When system is in error, both led flash the error code.  
 -P0 turns OFF/ON only the joystick.  
 -An external power off switch is required to turn OFF/ON the EME controls and joystick.

3	10202C035	DLM122/2-AP	1	
2	183530045	JOYSTICK CJW2034A-AMH0402AQ/D2F08035	1	
1	183480165	KIT CAVO KCD05 PHC210C	1	
Pos.	Code	Description	Quan.	
Last revision description :				
		Description : DLM122/2-AP/1SOHF[S]13EME.U3T/1SOHF[S]8EME.U3(230)-LC(F0.8)-CVN2->CJW2034A-AMH0402AQ-0R3(A)-6N5(K)-7N5(K)-8RB(A)-ALV-CLR/D2F08035(TC)+KCD05/D2M08-01CCF0760(TC)-02M2M04345(TC)-03M2M04345(TC)-AU2F15735(TC)-AU1730(TC)	Scale 1:2	A1-SW
Substitute Technical Reference: Beneventi		Code 1XTE10157	I.R.	01
Draw. 10/05/16 TorreggianiM All rights reserved				